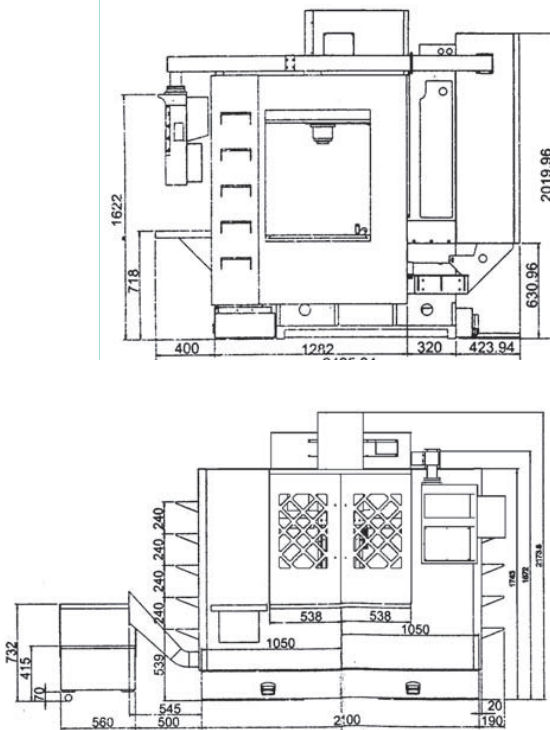


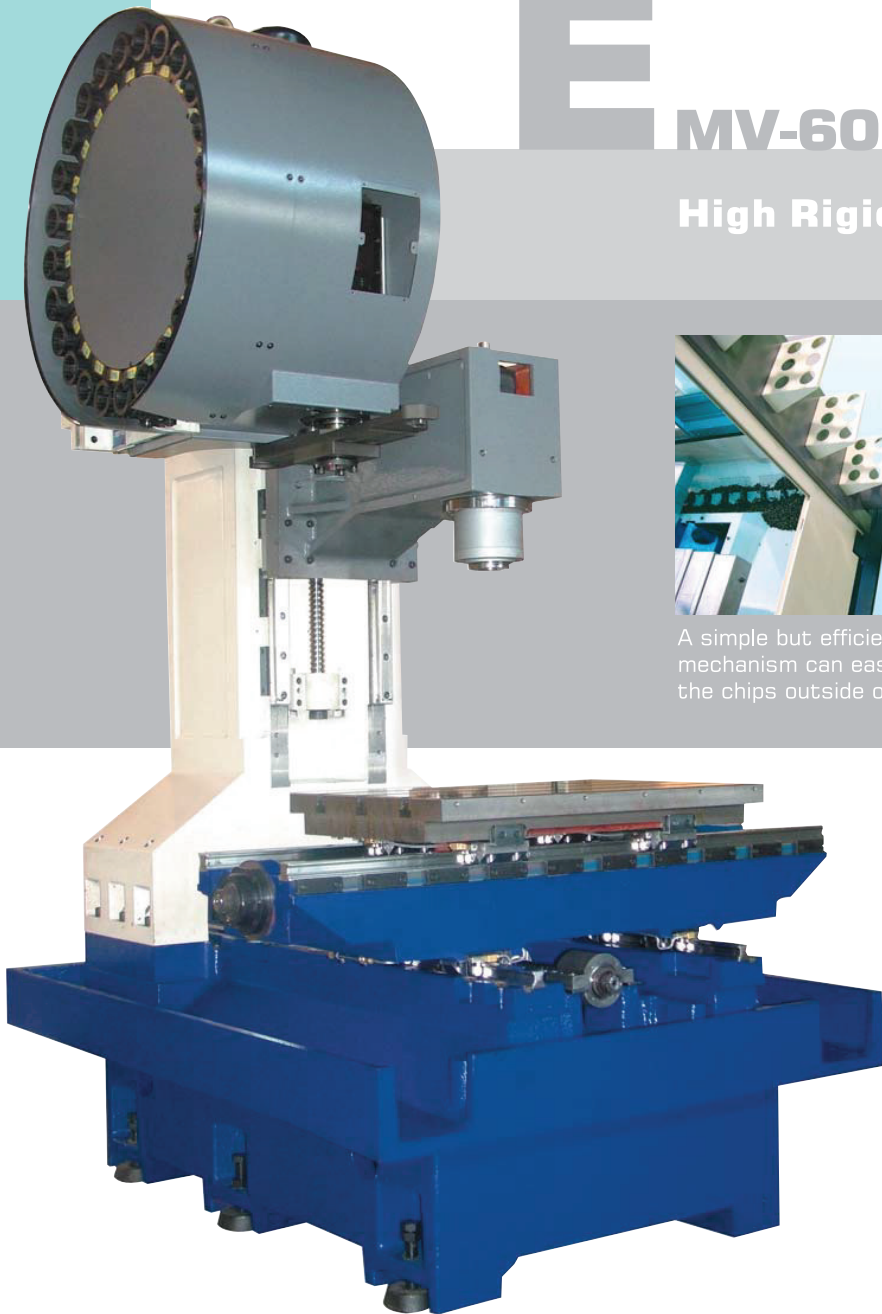
MV-600 Vertical Machining Center

- Pretension ballscrew for X, Y, Z, axis, ensure high positioning accuracy and durability.
- Thoroughly detail to suit easy access to assist precision operation, main & easy service.

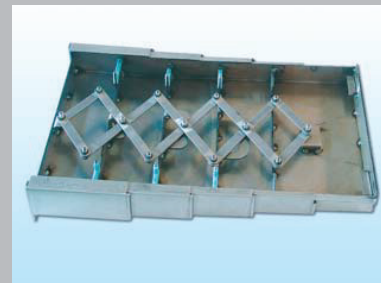


E MV-600 Vertical Machining Center

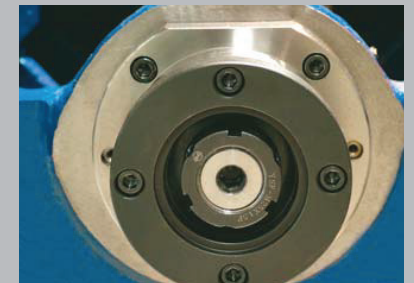
High Rigidity, High Accuracy Construction Design.



A simple but efficient removal mechanism can easily convey the chips outside of the machine.



Synchronous motion protection cover.



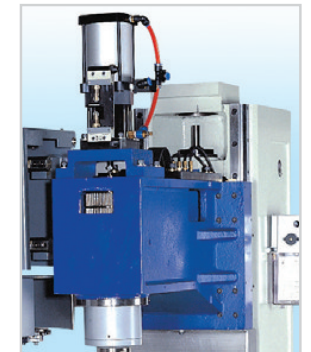
Pretension system, ensure high positioning accuracy and durability.



Washing down system



Convenient & simple and easy to use tool stand including tool-locked device.



The floating draw bar mechanism is applied. The tool unclamping force will not transmit to the spindle bearing. This extends the spindle bearing service life.

E MV-600 Vertical Machining Center

Excellent Features Provide More Value



High efficient electrical control system to match CE standard ensure the safety for operator. The electrical box mount heat exchanger to constant temperature.



High precision and premium quality Germany linear (optional) ways with wide blocks to resist wear, ensure high accuracy, excellent rigidity.



16 tools Armless type ATC Simplified magazine construction, safety, easy maintenance and trouble-free operation.



Enlarge coolant tank capacity can take away generated chip heat quickly. Operator can remove the tank in front or a side to save the space.



Convenient shelf for operator's equipment or work pieces.

The manufacturer reserves the right to modify the design, specifications or mechanisms, to improve the performances, without prior notice. All the specifications shown here are for reference only.

		Unit	ETM-510		EMV-600	
Controller			Mitsubishi M64SM(standard)	Fanuc OiMC / MATE (optional)	Mitsubishi M64SM(standard)	Fanuc OiMC (optional)
Travel	Max. Travel For X Axis	mm	510		610	
	Max. Travel For Y Axis	mm	400		460	
	Max. Travel For Z Axis	mm	300 ; 450 (optional Arm type Attached)		480	
	Spindle Nose To Table	mm	200~500		165~645	
	Spindle Center To Column	mm	420		500	
Table	Table Size	mm	600 x 360		700 x 450	
	Max. Table Capacity	Kg	250		300	
	T-solt (Center x width x No.)	mm	100 x18 x 3		125 x18 x 3	
	Table height from floor	mm	800		850	
Spindle	Spindle Motor	kw	3.7 ; 5.5 (optional)	5.5	5.5 ; 7.5 (optional)	
	Spindle Taper		BT 30		BT 40	
	Spindle Speed	rpm	240-8000 ; 10000 , 12000 (optional)		8000 ; 10000 ; 12000, 15000 (optional)	
Feed Rate	X / Y / Z Servo Motor	kw	0.5 / 0.5 / 1	1.2 / 1.2 / 1.2	0.5 / 0.5 / 3.5	1.2 / 1.2 / 2.5
	X / Y / Z Rapid Traverse	m / min	36 / 36 / 30 ; 48 / 48 / 48 (optional)		24 / 24 / 20 ; 36 / 36 / 24 , 48 / 48 / 32 (optional)	
	Cutting feed rate	m / min	1-10000		1-10000	
ATC System	Tool Shank		BT30		BT / CAT40	
	Pull Stud		MAS403 P30T-1 (45°)		P40T (45°)	
	Tool Q'ty	pcs	Turret type 12T ; Arm type 20T (optional)		Armless type 16T ; Arm type 24T (optional)	
	Max. Tool Diameter	mm	65		120	
	Max. Tool Length	mm	200		200	
	Max. Tool Weight	kg	3		6	
	Tool Change Time (T-T)	sec	1.9 (turret type)		1.8 (Arm type)	
	Tool Change Time (C-C)	sec	4.8 / 150mm (turret type)		4.8 / 150mm (Arm type)	
Dimension	Floor Space Requirement	mm	2150 x 1550 x 1860		3350 x 2426 x 2500	
	Machine Height	mm	1860		2600	
	Machine Weight	kgs	2800		4000	
Other	Air Requirement	cm ²	6Kg /cm ²		6Kg /cm ²	
	Power Requirement	kva	10		15	
	Motor for Coolant Water	hp	1 / 2 hp		1 / 2 hp	

Standard Accessories

- Chip auger
- Full enclosed guard
- Auto lubrication system
- Levelling block & screws
- Tool box with tools
- Work lamp
- Alarm light
- Portable Air gun
- Z axis with Brake (EMV600 Only)
- Spindle Air seal system (EMV600 Only)
- Portable flush gun
- Rigid Tapping
- Electric box heat exchanger
- Armless type ATC system (16T : EMV-600) / 12T : ETM-510)

Optional Accessories

- Fanuc / Mitsubishi Controller
- Wash-down system
- Rotary Table (4th Axis)
- Spindle 10000 RPM/12000 RPM (15000 RPM - Only 600 I.D.D.)
- Spindle oil cooling system
- Digital Readout for 3 Axis
- Auto tool length measure
- Tool Probe system
- Oil Demister
- Disc Oil / Coolant separator
- Arm type ATC system (24T : EMV-600 / 20T : ETM-510)
- Chip Conveyor
- Spindle ring splash system